



Christos Counselling

GRIEF SUPPORT

- RED NOSE – 24 HOURS A DAY,
SEVEN DAYS A WEEK,
TEL : **1300 308 307**

- SANDS (MISCARRIAGE, STILLBIRTH
AND NEWBORN DEATH SUPPORT)
TEL. **(03) 9899 0217 OR 1300 0
SANDS**

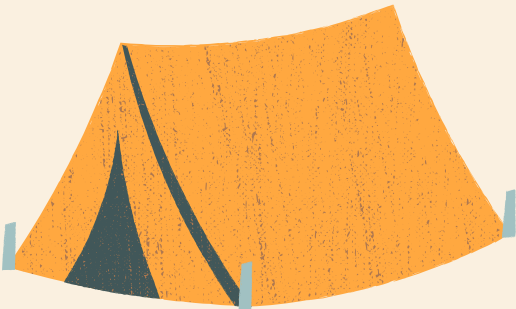
- VERY SPECIAL KIDS (BEREAVEMENT
SUPPORT PROGRAM)
TEL. **(03) 9804 6253 OR 1800 888
875**

- VICTIMS OF CRIME HELPLINE
TEL. **1800 819 817**

- ROAD TRAUMA SUPPORT SERVICES
VICTORIA
TEL. **(03) 8877 6900 OR 1300 367
797**

- **GRIEFLINE** PROVIDE A NATIONAL TOLL-
FREE HELPLINE 8 AM TO 8 PM MONDAY TO
FRIDAY (AEST)

TEL. **1300 845 745**. THERE IS ALSO A FREE
BOOK A CALL SERVICE ALLOWING HELP-
SEEKERS THE OPTION TO SCHEDULE A GRIEF
SUPPORT CALL FROM A SPECIALLY TRAINED
GRIEFLINE TELEPHONE SUPPORT PERSON.



- **NURSE-ON-CALL**
TEL. **1300 60 60 24** – FOR EXPERT HEALTH
INFORMATION AND ADVICE (24 HOURS, 7
DAYS)

- **GRIEF AUSTRALIA** – BEREAVEMENT
COUNSELLING AND SUPPORT SERVICES
TEL. **(03) 9265 2100 OR 1800 642 066**

- **THE COMPASSIONATE FRIENDS VICTORIA**
– GRIEF SUPPORT AFTER THE DEATH OF A
SON, DAUGHTER, BROTHER OR SISTER TEL.
(03) 9888 4944 OR 1300 064 068

- **MERCY GRIEF SERVICES** – FOR PEOPLE
LIVING IN THE WESTERN REGION OF
MELBOURNE TEL. **(03) 9313 5700**

- **HOPE BEREAVEMENT CARE** – FOR PEOPLE
LIVING IN THE BARWON REGION TEL. **(03)
4215 3358**

- **KIDS HELPLINE** – TELEPHONE
COUNSELLING TEL. **1800 551 800** (24
HOURS, 7 DAYS)

- **LIFELINE** – CRISIS SUPPORT AND SUICIDE
PREVENTION SERVICES TEL. **13 11 14** (24
HOURS, 7 DAYS)

